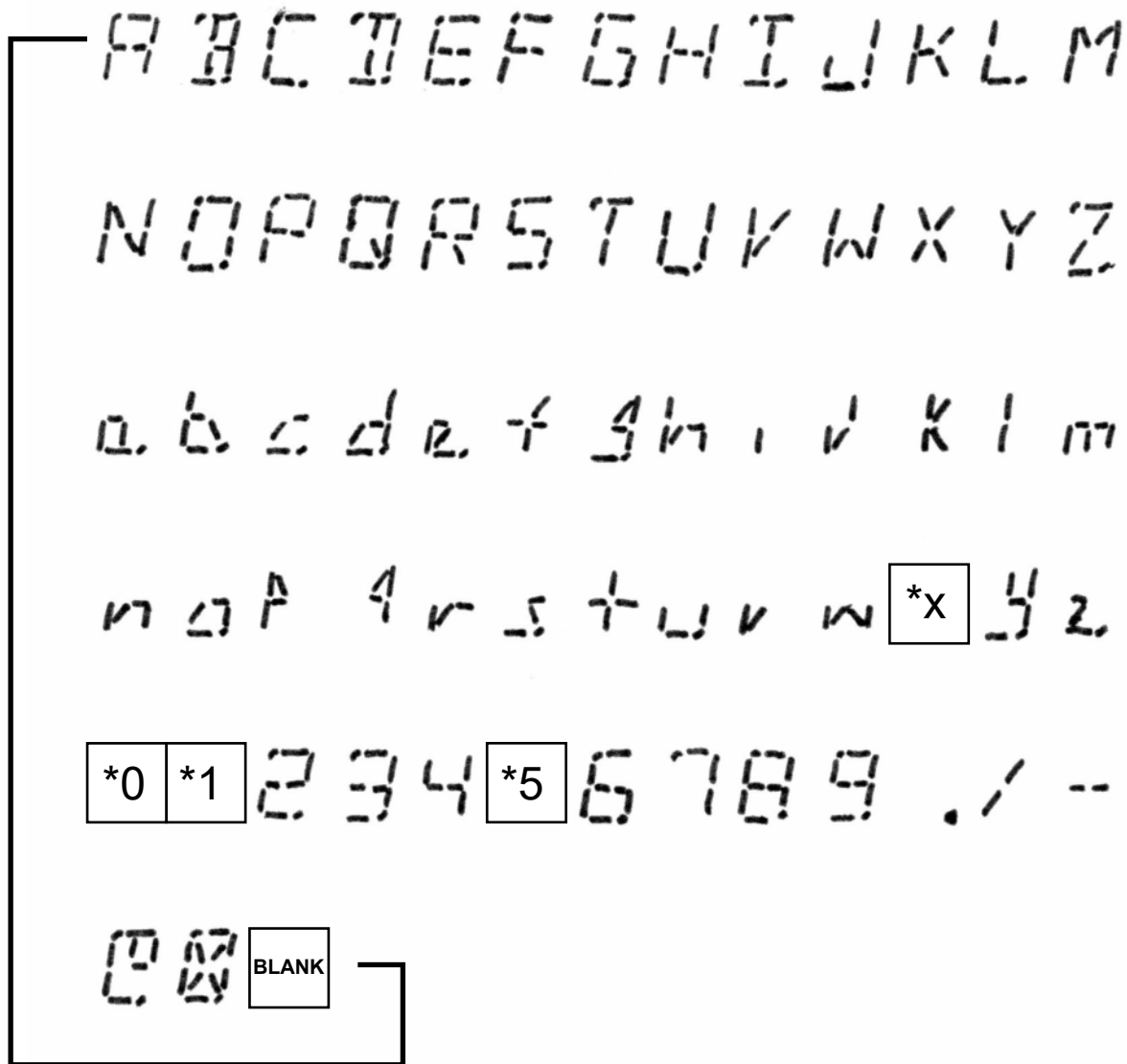


1802 Badge Character Set



The 1802 Badge has a total of 64 possible characters from which to assemble the 32-character messages. Any character position can be set to any of the available 64 characters (see the chart above).

Using the Badge's UP and DOWN buttons, the character set can be scrolled through until the desired character is selected. Using this chart and whatever character is currently stored for the selected message position, the user can easily determine whether it will be quicker (and fewer button presses) to scroll UP towards the end of the set, or scroll DOWN towards the start of the set (yes, this can be counterintuitive). When reaching one end or the other of the set, the Badge will 'wrap' around to the opposite end of the set. The last character in the set is a 'blank' (space).

- * x There is no lowercase "x"; use the uppercase "X"
- * 0 There is no number "0"; use the uppercase letter "O"
- * 1 There is no number "1"; use the lowercase letter "L"
- * 5 There is no number "5"; use the uppercase letter "S"